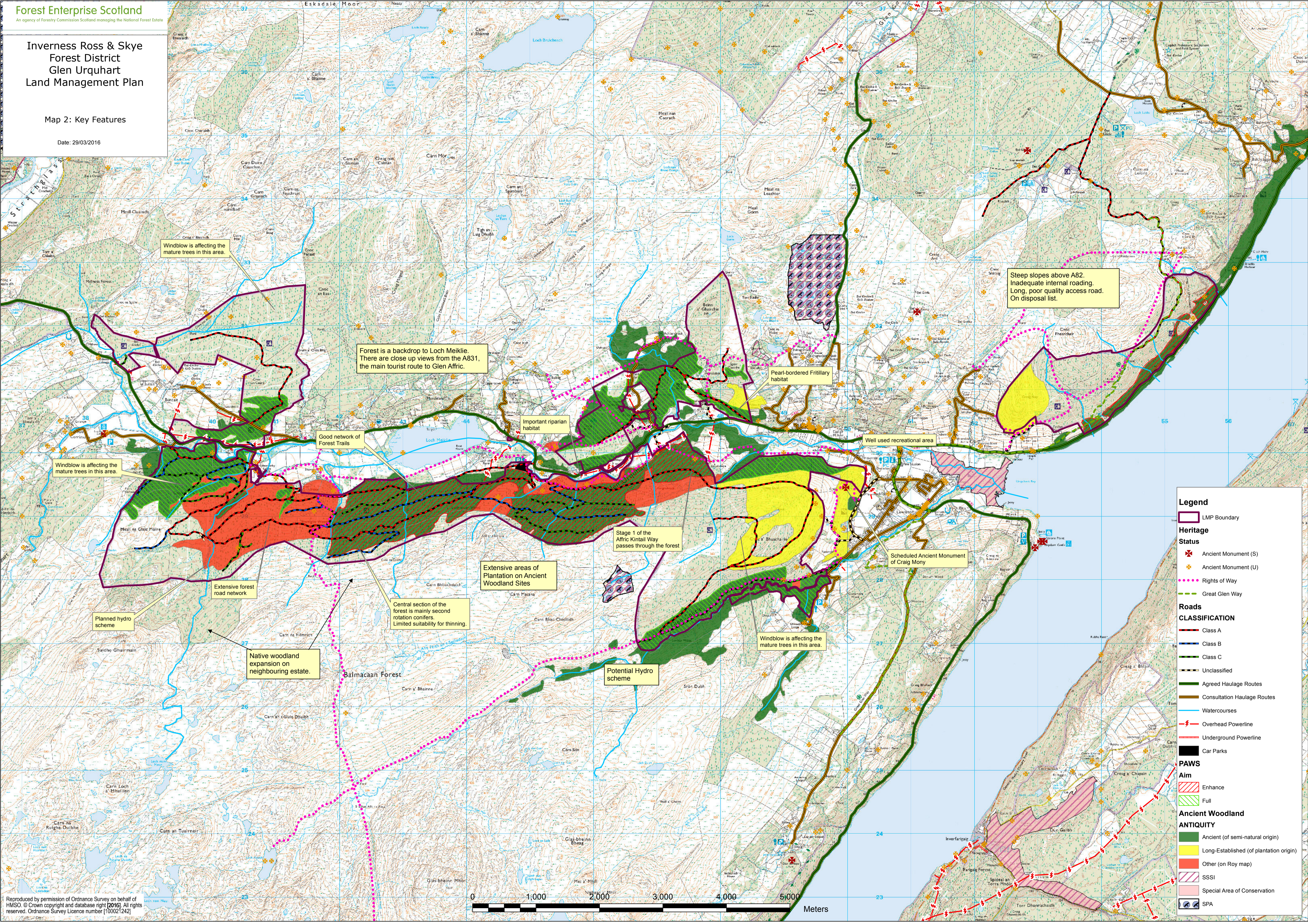


**Inverness Ross & Skye
Forest District
Glen Urquhart
Land Management Plan**

Map 2: Key Features

Date: 29/03/2016



Windblow is affecting the mature trees in this area.

Forest is a backdrop to Loch Meikle. There are close up views from the A831, the main tourist route to Glen Affric.

Steep slopes above A82. Inadequate internal roading. Long, poor quality access road. On disposal list.

Windblow is affecting the mature trees in this area.

Good network of Forest Trails

Important riparian habitat

Pearl-bordered Fringing habitat

Well used recreational area

Stage 1 of the Affric Kintail Way passes through the forest

Extensive areas of Plantation on Ancient Woodland Sites

Scheduled Ancient Monument of Craig Mory

Extensive forest road network

Central section of the forest is mainly second rotation conifers. Limited suitability for thinning.

Potential Hydro scheme

Windblow is affecting the mature trees in this area.

Native woodland expansion on neighbouring estate.

Balmacaan Forest

Legend

- LMP Boundary
- Heritage Status**
 - Ancient Monument (S)
 - Ancient Monument (U)
 - Rights of Way
 - Great Glen Way
- Roads CLASSIFICATION**
 - Class A
 - Class B
 - Class C
 - Unclassified
 - Agreed Haulage Routes
 - Consultation Haulage Routes
 - Watercourses
 - Overhead Powerline
 - Underground Powerline
 - Car Parks
- PAWS Aim**
 - Enhance
 - Full
- Ancient Woodland ANTIQUITY**
 - Ancient (of semi-natural origin)
 - Long-Established (of plantation origin)
 - Other (on Roy map)
 - SSSI
 - Special Area of Conservation
 - SPA

